



BFM Series

HOUSINGS
 MULTIPLE BAGS
 SWING BOLTS RATHMANN TYPE

MAIN APPLICATIONS:

- DESALINATION
- WATER TREATMENT
- PETROCHEMICAL
- OIL & GAS
- FINE CHEMICAL
- FOOD & BEVERAGE
- POWER GENERATION
- PAINTS AND RESIN
- PHARMACEUTICAL
- MICROELECTRONIC
- STEEL MILL
- GENERAL INDUSTRIES

CHARACTERISTICS:

- Construction materials:
 Stainless steel 304-SS and 316-SS
(other material available as option).
- Conform to EN 13445 or ASME Sect. VIII Div. 1 codes
(other codes available upon request).
- Suitable for liquids and gas Gr. 1 and 2 filtration.
- Conform to 2014/68/UE PED Directive.
- Conform to 2014/68/UE ATEX Directive.
- 1935/2004/CE certification available upon request.
- Top cover with Rathmann type swing bolts
(Flange ANSI o EN, swing bolts or quick opening closure as option).
- Suitable for pressure up to 10 bar *(higher pressure available as option).*
- Suitable for filtering bags size 2.
- Suitable for pleated bags.
- Suitable for filtering bags with metal ring or PolyformSEAL™.
- Suitable for high flow-rate and low spare cost.
- Top cover o-ring seal.
- Designed for easy and quick filtering bags replacement.
- Filtering bags keep in position directly from the top cover.
- Restrainer suitable for Delta-P up to 4 bar
(10 bar Delta-P design available as option).
- Available with heat jacket.

ASCO FILTRI

a mott company



BFM Series

HOUSINGS
MULTIPLE BAGS
SWING BOLTS RATHMANN TYPE

TECHNICAL DATA

MAX. WORKING CONDITIONS

6 bar @ 100 °C
10 bar @ 100 °C
(other pressures as option)

CONSTRUCTION MATERIAL

- 304-SS
- 316-SS
- Carbon steel (option)
- Hastelloy (option)

FINISHING

Internal/external:
- Pickling

GASKETS

- EPDM max. 120 °C
- Viton max. 230 °C
- Silicone max. 230 °C
- FEP max. 250 °C
- PTFE max. 250 °C

IN/OUT

- Up to 8"
(other connections as option)

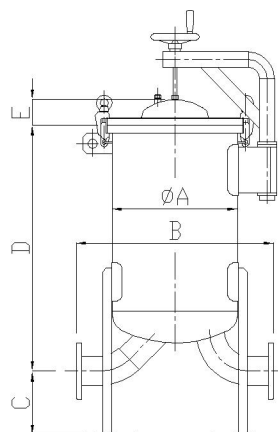
ACCESSORIES

- Differential pressure gauge
- Vent valve
- Drain valve
- Volume reducer
- Magnetic candles kit

Dimensions:

Model	Bags q.ty	Q max. [m ³ /h]	Dimensions [mm]					In/out	Vol. [lit]
			A	B	C	D	E		
BFM032	3	50	508	700	250	1020	120	3"	188
BFM042	4	50	508	700	250	1020	120	3"	188
BFM042	4	80	508	700	250	1020	120	4"	190
BFM042	4	140	609.6	900	250	1070	120	6"	267
BFM052	5	80	558.8	700	250	1020	120	4"	221
BFM052	5	180	609.6	900	250	1070	120	6"	267
BFM062	6	80	609.6	900	250	1070	120	4"	265
BFM062	6	190	609.6	900	250	1070	120	6"	267
BFM062	6	210	660.4	1350	350	1180	170	8"	326
BFM072	7	190	660.4	900	250	1070	120	6"	317
BFM072	7	250	660.4	1350	350	1180	170	8"	326
BFM082	8	280	762	1350	350	1180	170	8"	480

Max. flow-rate with water, clean Delta-P 0.1 bar and 50 µm filtering bags.
Flow-rates change in function of the installed filtration rating, filtering bags type and fluid viscosity.
For larger size and flow-rate contact ASCO Filtri.



Contact us for any further information.

We reserve the right to change the data of this specification without notice.

ASCO Filtri S.p.A.

Viale delle Scienze, 8
20082 Binasco (MI) - Italy

Phone: +39 02 89703.1

Fax: +39 02 89703.410

E-mail: info@ascofiltri.com

Web: www.ascofiltri.com

ASCO
FILTRI
a mott company